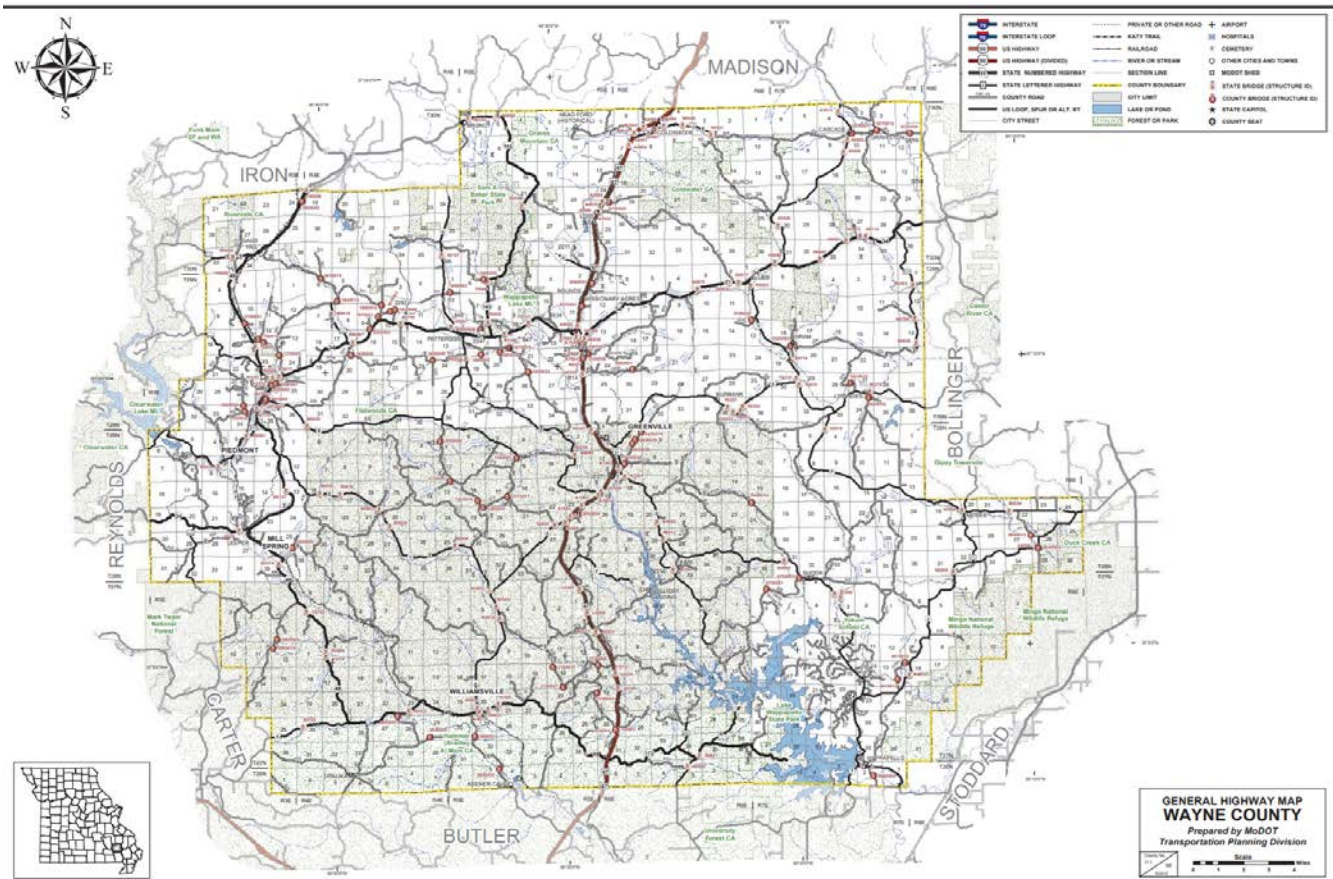


2 PLANNING AREA PROFILE AND CAPABILITIES

2	PLANNING AREA PROFILE AND CAPABILITIES	2.1
2.1	<i>Wayne County Planning Area Profile</i>	2.1
2.1.1	Geography, Geology and Topography	2.2
2.1.2	Climate	2.4
2.1.3	Population/Demographics	2.4
2.1.4	History	2.6
2.1.5	Occupations	2.6
2.1.6	Agriculture	2.7
2.1.7	FEMA Hazard Mitigation Assistance (HMA) Grants in Planning Area	2.7
2.1.8	FEMA Public Assistance (PA) Grants in Planning Area	2.9
2.2	<i>Jurisdictional Profiles and Mitigation Capabilities3, 7, and 8</i>	2.14
2.2.1	Unincorporated Wayne County	2.14
2.2.2	City of Greenville	2.19
2.2.3	City of Piedmont	2.21
2.2.4	City of Williamsville	2.23
2.2.5	Summary of Jurisdictional Capabilities3, 7, and 8	2.27
2.2.6	Special District	Error! Bookmark not defined.
2.2.7	School District Profiles and Mitigation Capabilities	2.31

2.1 WAYNE COUNTY PLANNING AREA PROFILE

Figure 2.1. Map of Wayne County, Missouri



Source: MODOT County Maps

The population of Wayne County, as reported in the 2020 U.S. Decennial Census, was 10,974, a decline of 2,547 residents, or -23.2%, from the 2010 U.S. Census of 13,521. In reviewing this census data, Wayne County experienced a population decline, while the State of Missouri and the country as a whole grew during the same time period. Missouri saw a growth of 2.8% (5,988,927 To 6,154.913, while the U.S. increased by 7.4% (308,745,539 to 331,449,281).

Wayne County is also a county with a low median household income (MHI), as compared to the State of Missouri and the nation. According to the 2022 American Community Survey (ACS) 5-Year Estimates, the MHI for Wayne County is \$42,758 a 2.7% increase from the 2010 Census reported value of \$33,473. Using the same 2022 ACS 5-year estimate, the MHI reported for the state was \$57,290 up from \$44,301—a 2.9% increase since 2010. In the nation, MHI estimate increased by 3.0% to \$50,046 to \$64,994 over the ten-year period.

Housing values also reflect wealth disparities between the planning area, the state, and nation. Per the 2010 ACS 5-Year Estimates, the median housing value in Wayne County was \$72,200, but increased to \$110,000 per the 2022 ACS 5-Year Estimate. For the same time periods, the U.S. and State of Missouri reported \$188,400/\$281,900 and \$137,700/\$199,400, respectively. The increases in median housing value from 2010 to 2022 amounted to 52.4% for Wayne County, 44.8% for Missouri, and 49.6% for the United States.

2.1.1 Geography, Geology and Topography

Located at the eastern edge of the Ozark Mountains, Wayne County, Missouri, consists of 774 square miles or 495,360 acres. According to the U.S. Census of Agriculture, the county has approximately 202,267 acres of harvested land, 12,270 acres of deciduous upland mixed oak forest, 67,471 acres of non-native, cool season grasslands, and 11,564 acres of deciduous seasonally flooded river front forest. A large portion of the Mark Twain National Forest is scattered throughout the county.

As a rural county with no planning or zoning, single family residences and mobile homes are sprawled throughout the county, usually tucked away in the dense forested areas and accessible by county-maintained gravel roads. There are only four incorporated cities within the county limits. Wayne County's geology includes Tertiary- and Quaternary- Age Materials and Ordovician-Age Bedrock, while its topography consists of half Highly Dissected Plateaus. Two rivers run through the planning area—the Black River and the St. Francis River. The Black River is the source of Clearwater Lake to the east of the planning area. The St. Francis River is the source of Wappapello Lake in the southeastern portion of the county. In addition, there are several creeks and multiple freshwater springs throughout the planning area.

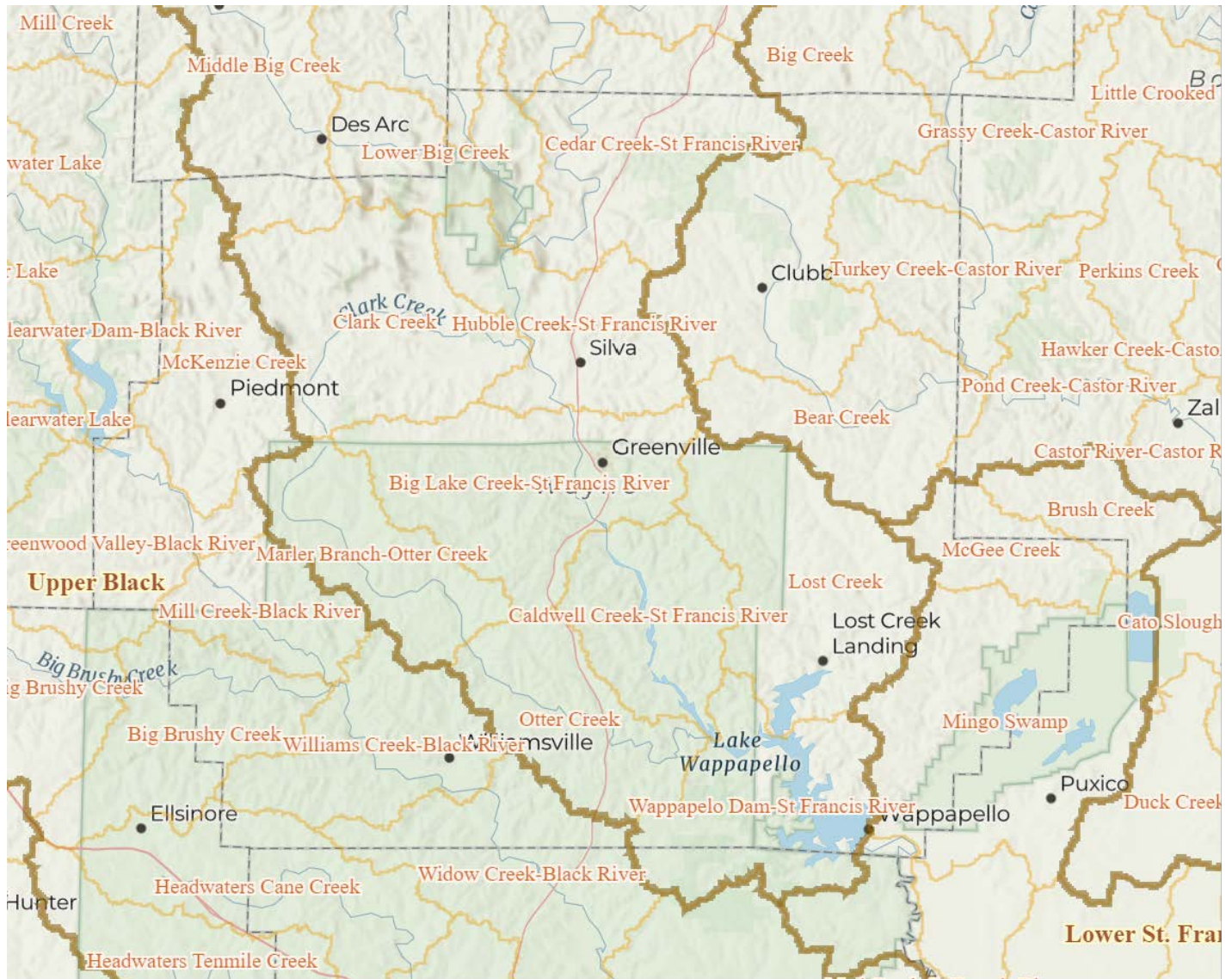
Wayne County is mostly rural with a large portion of its land area included within the Mark Twain National Forest. There are 10,088 surface acres of water in the county. Per the NRCS Soils Survey, soil types in the county are varied and range from silt loam to rock outcroppings to “extremely bouldery.”

Figure 2.2, below, shows the four watersheds located within the planning area. The Upper Black Watershed—in the western portion of the planning area—The Upper St. Francis Watershed—in the central portion of the county—The Lower St. Francis Watershed—in the southeastern corner of the county—and The Whitewater Watershed—in the northeastern portion of the county. Incorporated communities in the planning area and their watersheds are listed below.

City of Greenville – Upper St. Francis Watershed
City of Piedmont – Upper Black Watershed
City of Williamsville – Upper Black Watershed
Village of Mill Spring – Upper Black Watershed

There are no Wayne County incorporated municipalities located in either the Lower St. Francis or the Whitewater Watersheds.

Figure 2.2. Wayne County, Missouri Watershed Map



Source: [Missouri Watersheds \(arcgis.com\)](https://arcgis.com)

2.1.2 Climate

According to the National Weather Service (NWS) the average annual precipitation within the planning area is 49.65 inches, higher than the United States average of 37 inches. It is reported that of these 49.65 inches of precipitation, 10 inches of that is snowfall annually. The number of days with any measurable precipitation is 97 annually. On average, there are 212 sunny days per year in Wayne County. The High Plains Regional Climate Center provides monthly climate averages based on data collected from 1981-2010. According to this data, the maximum average monthly temperature in Wayne County occurs in July and the minimum occurs in January.

2.1.3 Population/Demographics

The City of Piedmont is the largest incorporated city in Wayne County with a population of 1,897 as reported in the 2020 Decennial Census. Other incorporated cities in the county include the City of Greenville—the county seat—with a population of 443 persons, the City of Williamsville with a

population of 279, and the Village of Mill Spring with a population of 159 persons. There are no areas of active growth within the planning area. The county and all four of its incorporated municipalities demonstrated population decline from 2010 to 2020 with the unincorporated portion of the county experiencing the most decline at 22.0%.

Table 2.1, below, provides the populations for each city, village, and the unincorporated county for 2010 and 2020 with the number and percentage change. The unincorporated area population was estimated by subtracting the populations of the incorporated areas from the overall county population.

Table 2.1. Wayne County Population 2010-2020 by Jurisdiction

Jurisdiction	2010 Population	2020 Population	# Change (2010-2020)	% Change (2010-2020)
Wayne County - Unincorporated Portion	10,502	8,196	-2,306	-22.0%
City of Greenville	511	443	-68	-13.3%
City of Piedmont	1,977	1,897	-80	-4.1%
City of Williamsville	342	279	-63	-18.4%
Village of Mill Spring	189	159	-30	-15.9%
Total	13,521	10,974	-2,547	-18.8%

Source: U.S. Bureau of the Census, 2010 & 2020 Decennial Census

Based on the 2022 American Community Survey 5-Year Estimates, the planning area has a lower proportion of children under five years of age and a greater proportion of adults older than 65 years of age. For example, the proportion of children under five years of age in the county was estimated at 4.5%, while in the state and nation, the figure was 5.7% and 5.5%, respectively. At the same time, residents over 65 years of age within the county comprised 24.6% of the total population, while in the state and nation, these figures were 18.0% and 17.3%, respectively.

Per the US. Census Bureau, there are 6,215 housing units within the planning area. Of that number 4,490 units are occupied. The average household size in Wayne County among owner-occupied units is 2.43 persons. Among renter-occupied households within the county, an average of 2.44 persons comprise a household. In Missouri, these values equal 2.54 and 2.06, respectively. And, in the U.S., 2.63 and 2.27, respectively.

The University of South Carolina developed an index to evaluate and rank the ability to respond to, cope with, recover from, and adapt to disasters. The index synthesizes 29 socioeconomic variables which research literature suggests contribute to reduction in a community's ability to prepare for, respond to, and recover from hazards. SoVI® data sources include primarily those from the United States Census Bureau. The hazard-specific vulnerability analyses included in Chapter 3 (Risk Assessment) consider data from this source. A low SoVI score indicates the county is more resilient to hazard events, while a high number means that the county is less resilient.

Table 2.2, below, provides additional demographic and economic indicators for the planning area from the 2022 American Community Survey 5-year estimates.

Table 2.2. Unemployment, Poverty, Education, and Language Percentage Demographics, Wayne

County, Missouri

Jurisdiction	Total in Labor Force	Percent of Population Unemployed	Percent of Families Below the Poverty Level	Percentage of Population (High School graduate)	Percentage of Population (Bachelor's degree or higher)	Percentage of population with spoken language other than English
Wayne County	9,207	8.3%	25.1%	42.1%	6.9%	1.2%
City of Greenville	356	4.0%	8.8%	38.0%	2.3%	0.0%
City of Piedmont	2,150	5.8%	46.8%	38.3%	8.3%	0.2%
City of Williamsville	238	16.2%	29.0%	41.7%	6.8%	0.0%
Village of Mill Spring	95	0.0%	45.9%	29.9%	0.0%	0.0%
State*	4,940,395	3.7%	12.8%	30.1%	19.7%	6.6%
Nation*	266,411,973	2.7%	12.5%	26.1%	21.6%	22.0%

Source: U.S. Census, 2022 American Community Survey, 5-Year and 1-Year* Estimates

2.1.4 History

Wayne County is located in the northeastern portion of the Ozark Foothills Region. Prior to its formation on December 11, 1818, Wayne County was part of Cape Girardeau and Lawrence Counties. Initially, Wayne County consisted of a large territory—one which now comprises all or portions of 32 Missouri counties. While the county was geographically expansive, it was sparsely populated with only 1,443 inhabitants per the census of 1820. The county was named after “Mad” Anthony Wayne—a general in the American Revolution.

Some major industries and employers in Wayne County include Clark Mountain Nursing Home, Impact Fisheries, Fine Labs, and Kerri Industries. Two healthcare clinics offer high-quality medical assistance to county residents, while two primary public districts educate children living in the county. A variety of recreational areas, including Clearwater Lake, Wappapello Lake, Sam A. Baker State Park, Markham Springs, Old Greenville U.S. Historic Site, Mark Twain National Forest, Coldwater State Forest, Black River, and the Saint Francis River are also located in Wayne County.

2.1.5 Occupations

Table 2.3, below, provides occupation statistics for the incorporated cities and the county, as a whole. Percentages are used to allow comparisons between communities.

Table 2.3. Occupation Statistics, Wayne County, Missouri

Place	Management, Business, & Financial (%)	Computer Engineering & Science (%)	Education, Legal, Community Service, Arts & Media (%)	Healthcare Practitioners & Technical (%)	Healthcare Support (%)	Protective Services (%)	Sales & Office (%)	Natural Resources, Construction & Maintenance (%)	Production, Transportation, & Material Moving (%)
Wayne County	7.9	2.3	10.9	6.1	6.7	1.0	19.0	9.6	27.7
City of	17.4	0.0	12.4	0.0	13.2	0.0	11.6	23.1	13.2
City of	28.5	2.6	9.5	11.6	4.6	4.1	20.1	13.7	23.0
City of	28.4	0.0	13.6	3.4	14.8	0.0	13.6	3.4	12.5

Village of Mill Spring	36.4	0.0	21.2	3.0	3.0	0.0	3.0	12.1	27.3
------------------------	------	-----	------	-----	-----	-----	-----	------	------

Source: U.S. Census, 2022 American Community Survey, 5-year Estimates.

2.1.6 Agriculture

According to the United States Department of Agriculture’s *2022 Census of Agriculture*, of Wayne County’s 485,873 total acres, 94,567 acres--or 19.5%--are utilized as farmland. Per the same source, there are 352 farms in the county with an average size of 269 acres. Neighboring counties reported average farm sizes ranging from 291 acres in Madison County to the north to 655 acres in Stoddard County to the east.

Of the 94,567 acres occupied by farms in Wayne County, cropland comprised 18,122 acres in 2022—down from 33,167 acres in 2017. Woodland comprised 40,513 acres in 2022—up from 33,380 acres in 2017. Pasture comprised 29,445 acres in 2022—up from 26,095 in 2017. Overall, conversion of cropland to woodland and pasture appears to be trending in the planning area.

Averages sales per farm in the county decreased from \$37,157 in 2017 to \$28,602 in 2022. In total Wayne County’s 352 farms produced \$10,068,000 in crops, hay, livestock, etc. during 2022. The majority of farms in the county produce hay and/or livestock. During 2022, 91 farms produced hay valued at \$835,000, while 164 farms produced \$7,064,000 in cattle and calves. Sheep and goats were produced by 22 farms during the year at a value of \$134,000.

Wayne County farms produce some row crops—mostly soybeans, some corn, and some wheat. During 2022, nine farms in the planning area produced soybeans valued at \$937,000. Seven farms produced corn and five produced wheat, though both types of farms overall reported deficits. In total, during 2022, fourteen farms produced \$1,682,000 in grains, beans, peas, and oil seeds. In 2017, the value of such crops produced in the county was \$7,209,000—a significant decrease in production value (-76.7%).

Per the *2022 Census of Agriculture*, the industry makes up only a small amount of the workforce in the county. During the year, only 49 of the county’s 352 farms employed farm workers. Sixty-seven workers—including twelve migrant workers—earned \$274,000. This amounts to a mere .6% of the county’s total workforce.

2.1.7 FEMA Hazard Mitigation Assistance (HMA) Grants in Planning Area

The table below lists Hazard Mitigation Assistance grants awarded to political jurisdictions within Wayne County in the past 30 years. Subrecipients in the planning area have received \$7,714,315 in federal funds via three mitigation grant programs.

Table 2.4. FEMA HMA Grants in Wayne County from 1993-2022

Disaster Declaration	Project Type	Sub-Grantee	Date Approved	Project Total (\$)
995	Acquisition of Private Real Property	City of Piedmont	1997-08-13	297,800
1023	Acquisition of Private Real Property	City of Piedmont	1998-01-16	35,530

1006	Acquisition of Private Real Property	City of Piedmont	1999-02-19	544,139
1054	Acquisition of Private Real Property	City of Piedmont	1998-01-16	355,834
N/A - FMA	Acquisition of Private Real Property	City of Piedmont	1997-10-02	240,000
N/A - FMA	Acquisition of Private Real Property	City of Piedmont	1998-04-26	151,680
N/A - FMA	Acquisition of Private Real Property	City of Piedmont	1997-10-01	56,853
1403	Acquisition of Private Real Property (Structures and Land) - Riverine; Acquisition of Vacant Land	City of Piedmont	2007-11-05	434,166
1676	Acquisition of Private Real Property	City of Piedmont	2013-12-03	779,357
1676	Acquisition of Private Real Property (Structures and Land) - Riverine	Wayne County	2013-08-22	211,723
1749	Acquisition of Public Real Property (Structures and Land) - Riverine	Wayne County	2014-10-30	187,276
N/A - RFC	Acquisition of Private Real Property (Structures and Land) - Riverine	City of Piedmont	2009-09-09	307,500
1980	Safe Room (Tornado and Severe Wind Shelter) - Public Structures	CLEARWATER R-I SCHOOL DISTRICT	2014-04-02	1,562,760
1980	Safe Room (Tornado and Severe Wind Shelter) - Public Structures	GREENVILLE R-II SCHOOL DISTRICT	2015-10-06	1,612,700
N/A - PDM	Safe Room (Tornado and Severe Wind Shelter) - Public Structures	Greenville R-II School District	2017-01-16	936,997
Total				7,714,315

Source: Federal Emergency Management Agency, 2023
[OpenFEMA Data Sets | FEMA.gov](https://www.fema.gov/openfema)

2.1.8 FEMA Public Assistance (PA) Grants in Planning Area

The total dollar figure for previous FEMA Public Assistance (PA) Grants awarded to Wayne County and its participating jurisdictions and special districts from 2002 to 2022 totaled \$4,490,550.17. The table below is organized by the disaster leading to the public assistance. The disaster designations are listed below by type:

- DR-1412—Severe Storm & Tornadoes (2002)
- DR-1749—Severe Storm & Flooding (2008)
- DR-1748—Severe Winter Storm & Flooding (2008)
- DR-1822—Severe Winter Storm (2009)
- DR-1980—Severe Storms, Flooding & Tornado (2011)
- DR-4317—Severe Storms, Flooding & Tornado (2017)
- DR-4451—Severe Storms, Flooding & Tornado (2019).

Within the listing below are 14 debris removal projects (comprising 8.0% of 174 total PA projects), 25 protective measures projects (14.4%), 111 road & bridge projects (63.8%), 11 public utility projects (6.3%), eight public building projects (4.6%), two water control facility projects, one recreational/other project and one state management project.

Table 2.5. FEMA PA Grants in Wayne County from 2002-2023

Disaster Declaration	Project Type	Project Size	Applicant	Project Total
1412	C - Roads and Bridges	Small	Wayne County	\$2,600.00
1412	A - Debris Removal	Small	City of Piedmont	\$2,441.52
1412	C - Roads and Bridges	Small	City of Piedmont	\$12,607.84
1412	C - Roads and Bridges	Small	Wayne County	\$37,420.28
1412	F - Public Utilities	Small	City of Piedmont	\$14,566.08
1412	C - Roads and Bridges	Small	City of Piedmont	\$8,658.05
1412	C - Roads and Bridges	Small	Wayne County	\$8,538.12
1412	C - Roads and Bridges	Small	Wayne County	\$1,573.08
1412	C - Roads and Bridges	Small	Wayne County	\$2,536.80
1412	C - Roads and Bridges	Small	Wayne County	\$5,556.00
1412	C - Roads and Bridges	Small	Wayne County	\$5,985.82
1412	C - Roads and Bridges	Small	Wayne County	\$6,831.02
1412	C - Roads and Bridges	Small	Wayne County	\$33,280.92
1412	B - Protective Measures	Small	Wayne County	\$4,083.81
1412	C - Roads and Bridges	Small	Wayne County	\$40,328.57
1412	A - Debris Removal	Small	Wayne County	\$2,185.00
1412	C - Roads and Bridges	Small	Wayne County	\$16,827.60
1412	C - Roads and Bridges	Small	Wayne County	\$25,428.98
1412	C - Roads and Bridges	Large	Wayne County	\$70,665.96
1412	C - Roads and Bridges	Large	Wayne County	\$64,479.80
1412	C - Roads and Bridges	Large	Wayne County	\$128,000.08
1412	C - Roads and Bridges	Large	Wayne County	\$128,018.20
1412	C - Roads and Bridges	Large	Wayne County	\$98,282.99

1412	C - Roads and Bridges	Large	Wayne County	\$26,840.92
1748	B - Protective Measures	Small	Wayne County	\$1,298.30
1748	A - Debris Removal	Small	Wayne County	\$4,537.06
1748	B - Protective Measures	Small	Wayne County	\$2,260.00
1748	A - Debris Removal	Small	Wayne County	\$8,423.34
1749	A - Debris Removal	Small	City of Piedmont	\$9,533.60
1749	C - Roads and Bridges	Small	Wayne County	\$6,032.65
1749	C - Roads and Bridges	Small	Wayne County	\$7,129.17
1749	C - Roads and Bridges	Small	Wayne County	\$4,769.36
1749	A - Debris Removal	Small	City of Piedmont	\$9,052.63
1749	C - Roads and Bridges	Small	Wayne County	\$23,252.53
1749	C - Roads and Bridges	Small	Wayne County	\$1,875.01
1749	B - Protective Measures	Small	City of Piedmont	\$39,134.52
1749	C - Roads and Bridges	Small	Wayne County	\$2,706.50
1749	F - Public Utilities	Small	223-UFOLH-00	\$4,571.00
1749	B - Protective Measures	Small	City of Piedmont	\$18,048.60
1749	B - Protective Measures	Small	223-UFOLH-00	\$4,779.71
1749	C - Roads and Bridges	Small	Wayne County	\$3,871.92
1749	C - Roads and Bridges	Small	Wayne County	\$4,479.22
1749	A - Debris Removal	Small	Wayne County	\$22,006.06
1749	C - Roads and Bridges	Small	Wayne County	\$4,663.76
1749	C - Roads and Bridges	Small	Wayne County	\$8,600.54
1749	C - Roads and Bridges	Small	Wayne County	\$16,167.42
1749	C - Roads and Bridges	Small	Wayne County	\$12,384.57
1749	C - Roads and Bridges	Small	Wayne County	\$37,217.13
1749	C - Roads and Bridges	Small	Wayne County	\$37,824.21
1749	B - Protective Measures	Small	Wayne County	\$2,447.40
1749	E - Public Buildings	Small	223-UFOLH-00	\$1,000.00
1749	C - Roads and Bridges	Small	Wayne County	\$9,560.87
1749	C - Roads and Bridges	Small	Wayne County	\$20,311.78
1749	C - Roads and Bridges	Small	City of Williamsville	\$4,581.91
1749	A - Debris Removal	Small	City of Williamsville	\$1,136.00
1749	B - Protective Measures	Small	City of Williamsville	\$378.67
1749	C - Roads and Bridges	Small	Wayne County	\$36,509.03
1749	C - Roads and Bridges	Small	Wayne County	\$16,004.33
1749	C - Roads and Bridges	Small	Wayne County	\$12,138.92
1749	C - Roads and Bridges	Small	Wayne County	\$16,064.14
1749	C - Roads and Bridges	Small	Wayne County	\$29,846.18
1749	C - Roads and Bridges	Small	Wayne County	\$51,430.34
1749	C - Roads and Bridges	Small	Wayne County	\$16,133.42
1749	C - Roads and Bridges	Small	Wayne County	\$2,737.03
1749	C - Roads and Bridges	Small	Wayne County	\$4,401.86

1749	C - Roads and Bridges	Small	Wayne County	\$20,778.84
1749	C - Roads and Bridges	Small	Wayne County	\$13,881.66
1749	F - Public Utilities	Small	223-UFOLH-00	\$5,244.00
1749	C - Roads and Bridges	Small	Village of Mill Spring	\$10,199.31
1749	C - Roads and Bridges	Small	Wayne County	\$11,750.82
1749	F - Public Utilities	Large	City of Piedmont	\$139,357.22
1749	F - Public Utilities	Large	223-UFOLH-00	\$0.00
1749	C - Roads and Bridges	Small	Wayne County	\$11,923.89
1749	C - Roads and Bridges	Small	Wayne County	\$7,884.15
1749	C - Roads and Bridges	Small	Wayne County	\$41,267.41
1749	C - Roads and Bridges	Small	Wayne County	\$2,102.51
1749	B - Protective Measures	Small	City of Piedmont	\$40,975.90
1749	C - Roads and Bridges	Small	City of Piedmont	\$14,248.00
1749	C - Roads and Bridges	Small	City of Piedmont	\$29,500.00
1749	C - Roads and Bridges	Small	Wayne County	\$0.00
1749	C - Roads and Bridges	Small	City of Piedmont	\$11,500.00
1749	C - Roads and Bridges	Small	City of Piedmont	\$23,000.00
1749	C - Roads and Bridges	Small	Wayne County	\$33,918.71
1749	C - Roads and Bridges	Small	Village of Mill Spring	\$13,204.85
1749	C - Roads and Bridges	Small	Wayne County	\$15,970.31
1749	C - Roads and Bridges	Small	Wayne County	\$22,488.34
1749	C - Roads and Bridges	Small	Wayne County	\$13,345.89
1749	C - Roads and Bridges	Small	Wayne County	\$6,990.66
1749	E - Public Buildings	Small	City of Piedmont	\$9,537.00
1749	C - Roads and Bridges	Small	City of Piedmont	\$48,267.34
1749	C - Roads and Bridges	Small	City of Piedmont	\$9,218.89
1749	E - Public Buildings	Small	City of Piedmont	\$2,500.00
1749	A - Debris Removal	Small	City of Piedmont	\$1,534.70
1749	B - Protective Measures	Small	City of Piedmont	\$15,001.98
1749	G - Recreational or Other	Small	City of Piedmont	\$0.00
1749	E - Public Buildings	Small	City of Piedmont	\$16,903.75
1749	E - Public Buildings	Small	City of Piedmont	\$4,956.77
1749	F - Public Utilities	Small	City of Piedmont	\$56,248.73
1749	C - Roads and Bridges	Small	Wayne County	\$2,476.52
1749	C - Roads and Bridges	Small	Wayne County	\$32,217.66
1749	C - Roads and Bridges	Small	Wayne County	\$5,040.98
1749	C - Roads and Bridges	Small	Wayne County	\$23,614.23
1749	C - Roads and Bridges	Small	Wayne County	\$49,414.69
1749	C - Roads and Bridges	Small	Wayne County	\$10,628.90
1749	C - Roads and Bridges	Small	Wayne County	\$28,851.63
1749	C - Roads and Bridges	Small	Wayne County	\$14,095.12
1749	C - Roads and Bridges	Small	Wayne County	\$37,292.11

1749	C - Roads and Bridges	Small	Wayne County	\$18,794.05
1749	B - Protective Measures	Small	Wayne County	\$3,251.50
1749	C - Roads and Bridges	Small	Wayne County	\$32,478.80
1749	C - Roads and Bridges	Small	Wayne County	\$10,935.60
1749	C - Roads and Bridges	Small	Wayne County	\$5,446.41
1822	B - Protective Measures	Small	223-USEKB-00	\$2,614.27
1822	B - Protective Measures	Small	City of Piedmont	\$25,294.54
1822	B - Protective Measures	Small	Wayne County	\$38,000.42
1822	B - Protective Measures	Small	Wayne County	\$29,646.38
1822	E - Public Buildings	Small	223-UYZS7-00	\$14,503.76
1980	A - Debris Removal	Small	City of Piedmont	\$1,360.83
1980	B - Protective Measures	Small	City of Piedmont	\$1,988.60
1980	A - Debris Removal	Small	Wayne County	\$17,238.63
1980	B - Protective Measures	Small	East Wayne Amb	\$1,825.96
1980	B - Protective Measures	Small	East Wayne Amb	\$4,078.96
1980	B - Protective Measures	Small	Wayne County PWSD #3	\$2,621.66
1980	E - Public Buildings	Small	City of Piedmont	\$1,000.00
1980	F - Public Utilities	Small	Wayne County PWSD #3	\$8,272.00
1980	B - Protective Measures	Small	City of Greenville	\$35,877.26
1980	B - Protective Measures	Small	City of Greenville	\$19,552.67
1980	A - Debris Removal	Small	Wayne County	\$2,323.45
1980	C - Roads and Bridges	Small	Wayne County	\$53,194.08
1980	C - Roads and Bridges	Small	Wayne County	\$41,098.90
1980	A - Debris Removal	Small	City of Williamsville	\$1,630.00
1980	C - Roads and Bridges	Small	Wayne County	\$25,110.03
1980	C - Roads and Bridges	Small	Wayne County	\$52,879.77
1980	F - Public Utilities	Small	City of Piedmont	\$22,182.39
1980	D - Water Control Facilities	Small	City of Piedmont	\$1,900.00
1980	C - Roads and Bridges	Small	City of Williamsville	\$8,154.94
1980	C - Roads and Bridges	Small	Wayne County	\$48,342.37
1980	C - Roads and Bridges	Small	City of Greenville	\$10,886.27
1980	C - Roads and Bridges	Small	Wayne County	\$54,458.25
1980	C - Roads and Bridges	Small	City of Piedmont	\$9,541.52
1980	F - Public Utilities	Small	City of Greenville	\$18,481.00
1980	C - Roads and Bridges	Small	City of Greenville	\$1,782.00
1980	C - Roads and Bridges	Small	Wayne County	\$40,044.64
1980	E - Public Buildings	Small	City of Greenville	\$8,975.50
1980	C - Roads and Bridges	Small	Wayne County	\$23,731.91
1980	D - Water Control Facilities	Small	City of Williamsville	\$1,397.50
1980	C - Roads and Bridges	Small	Wayne County	\$45,585.80
1980	C - Roads and Bridges	Small	Wayne County	\$19,710.97
1980	A - Debris Removal	Small	City of Greenville	\$3,757.36

1980	C - Roads and Bridges	Small	Wayne County	\$32,526.49
1980	C - Roads and Bridges	Large	Wayne County	\$0.00
1980	C - Roads and Bridges	Small	Wayne County	\$38,024.69
1980	C - Roads and Bridges	Small	Wayne County	\$33,078.05
1980	C - Roads and Bridges	Small	Wayne County	\$25,901.34
1980	C - Roads and Bridges	Small	Wayne County	\$30,388.87
1980	C - Roads and Bridges	Small	Wayne County	\$55,511.99
1980	C - Roads and Bridges	Small	Wayne County	\$54,899.01
4317	F - Public Utilities	Small	223-UF0LH-00	\$3,772.50
4317	B - Protective Measures	Small	East Wayne Amb	\$6,899.18
4317	C - Roads and Bridges	Small	City of Greenville	\$11,340.53
4317	B - Protective Measures	Small	Wayne County	\$3,181.22
4317	B - Protective Measures	Small	City of Greenville	\$8,748.99
4317	C - Roads and Bridges	Large	Village of Mill Spring	\$102,191.60
4317	B - Protective Measures	Small	City of Piedmont	\$28,210.85
4317	C - Roads and Bridges	Small	Village of Mill Spring	\$106,271.25
4317	G - Recreational or Other	Small	City of Greenville	\$5,053.88
4317	C - Roads and Bridges	Small	Village of Mill Spring	\$14,207.74
4317	C - Roads and Bridges	Large	Wayne County	\$239,956.70
4317	C - Roads and Bridges	Small	City of Piedmont	\$20,240.30
4317	F - Public Utilities	Small	City of Piedmont	\$108,482.32
4317	C - Roads and Bridges	Large	Wayne County	\$346,701.85
4317	C - Roads and Bridges	Large	Wayne County	\$270,977.54
4451	C - Roads and Bridges	Small	Wayne County	\$49,660.73
4451	Z - State Management	Small	Wayne County	\$0.00
	Total			\$4,490,550.17

Source: Federal Emergency Management Agency, 2023

2.2 JURISDICTIONAL PROFILES AND MITIGATION CAPABILITIES^{3, 7, AND 8}

This section will include individual profiles for each participating jurisdiction. It will also include a discussion of previous mitigation initiatives in the planning area. There will be a summary table indicating specific capabilities of each jurisdiction that relate to their ability to implement mitigation opportunities. The unincorporated county is profiled first, followed by the incorporated communities, and then public school districts.

2.2.1 Unincorporated Wayne County

Wayne County, when mentioned in the following section, consists of all unincorporated areas within the county boundaries. Wayne County is a third-class county administered by a three-member county commission—a presiding commissioner and two associate commissioners. The associate commissioners represent the eastern and western “districts” of the county. The commissioners are elected for a term of four years.

The County Commission meets weekly in the courthouse located in the county seat of Greenville and at other times in special session as needed. The County Clerk is also present for these meetings and serves as the Chief Financial Officer of the Commission.

County property taxes are collected to support the road, school, and library infrastructure of the county. The Commission has general supervision of the county public roads and maintains the courthouse and other county owned buildings. The Commission oversees the budgets of a number of independently elected officers such as the County Clerk, Sheriff, Prosecuting Attorney, Coroner, Public Administrator, Assessor, Collector, Treasurer, and Surveyor.

Within the county governmental system are the following departments:

- County Commissioners
- County Assessor
- Prosecuting Attorney
- County Recorder
- County Sheriff
- County Treasurer
- County Collector
- Public Administrator
- Circuit Clerk
- Emergency Management Director
- Health Department
- Road & Bridge
- Federal Grants Coordinator

Mitigation Initiatives/Capabilities^{3, 7, and 8}

Wayne County is a small, poor, rural county that lacks many staffed positions common to

governments in more populated counties. The county's highway department has a supervisor that manages the maintenance of the county roads and reports directly to the commissioners. The county also has an emergency management director who works closely with the county commission. There is no zoning within the county. No parks & recreation staff, code enforcement staff, or zoning administration staff exist. Wayne County and its participating jurisdictions cannot expand or improve their reported capabilities due to a lack of financial and human resources.

Due to the size of Wayne County, its small staff and lack of resources, planning is often conducted on a regional basis rather than county level. The county is a member of its regional council of governments—the Ozark Foothills Regional Planning Commission. As such, Wayne County participates in the development and update of a regional Comprehensive Economic Development Strategy, the Regional Transportation Plan and the regional Public Transit-Human Services Transportation Plan. The county is a member of a regional local emergency planning district—the Ozark Foothills LEPD—that includes Butler, Ripley, and Wayne Counties. The planning area is incorporated within the LEPD's Local Emergency Operations Plan.

Wayne County utilizes its elected prosecuting attorney for legal direction and services. Its Highway Department supervisor is responsible for overseeing the county's transportation infrastructure, which consists primarily of gravel-surfaced roadways. The county funds a sheriff's department, which is responsible for maintaining order and enforcing law within the county. The county's presiding commissioner also serves as the county floodplain manager.

The county's emergency management director is a part-time minimally funded position. Wayne County—like its neighboring counties—has established no planning and zoning committee or land use designations within the balance of the county. Wayne County participates within the Ozark Foothills Local Emergency Planning District (LEPD), and is, consequently, included within the district's Local Emergency Operations Plan.

There are seven outdoor warning sirens throughout Wayne County—all are located within the jurisdictional boundaries of incorporated municipalities. The Village Chairperson is responsible for sounding the siren in the Village of Mill Spring. In the Cities of Piedmont (three sirens) and Greenville (two sirens), law enforcement has the responsibility of operating the sirens. In Williamsville, the fire chief is responsible for initiating the alarm.

There are three tornado saferooms located within the planning area. All three saferooms are located upon public school campuses. The addresses of the facilities are as follows:

Clearwater R-I School, 825 North Main Street, Piedmont;
Greenville R-II School, 178 Walnut Street, Greenville; and,
Williamsville Elementary School, Williamsville.

Major employers within the county consist of the Clearwater R-I School District with 170 employees, the Greenville R-II School District with 118 employees, Fine Labs with 100 employees, and Kerry Industries with 40 employees.

The table below lists resources available to the unincorporated portion of the county. The

information was pulled from the Data Collection Questionnaire completed by the county during 2023. It should be noted that no building codes or land use ordinances exist within Wayne County.

Table 2.6. Unincorporated Wayne County Mitigation Capabilities

Capabilities	Status, Including Date of Document or Policy
Planning Capabilities	
Comprehensive Plan	None
Builder's Plan	None
Capital Improvement Plan	None
City Emergency Operations Plan	N/A
County Emergency Operations Plan	<i>Ozark Foothills Emergency Operations Plan, 2004</i>
Local Recovery Plan	N/A
County Recovery Plan	None
City Mitigation Plan	N/A
County Mitigation Plan	None
Debris Management Plan	None
Economic Development Plan	<i>Ozark Foothills Comprehensive Development Strategy, 2023</i>
Transportation Plan	<i>Ozark Foothills Regional Transportation Plan, 2023</i>
Land-use Plan	None
Flood Mitigation Assistance (FMA) Plan	None
Watershed Plan	None
Firewise or other fire mitigation plan	None
School Mitigation Plan	N/A
Critical Facilities Plan	None
Policies/Ordinance	
Zoning Ordinance	None
Building Code	None
Floodplain Ordinance	Yes, 1987
Subdivision Ordinance	None
Tree Trimming Ordinance	None
Nuisance Ordinance	None
Stormwater Ordinance	None
Drainage Ordinance	None
Site Plan Review Requirements	None
Historic Preservation Ordinance	None
Landscape Ordinance	None
Seismic Construction Ordinance	None
Program	
Zoning/Land Use Restrictions	No
Codes Building Site/Design	No
Hazard Awareness Program	No
National Flood Insurance Program (NFIP)	Yes, 1987
NFIP Community Rating System (CRS) program	No
National Weather Service (NWS) Storm Ready	Yes
Firewise Community Certification	No
Building Code Effectiveness Grading (BCEGs)	No
ISO Fire Rating	Yes, (varies by fire department service area) Cascade Vol. Fire Dept, 9

	Chaonia Vol. Fire Dept, Not Available
	Clearwater Fire Protection District, 7
	Eagle Sky Fire Department, Not Available
	Lowndes Volunteer Fire & Rescue Dept, 9
	Piedmont City Fire Dept, 5
	Wappapello Vol. Fire Dept, 9
	Wayne County Vol. Fire Protection District #1, 8.5
	Williamsville Vol. Fire Dept, 8.5
Capabilities	Status, Including Date of Document or Policy
Economic Development Program	Member of the Ozark Foothills Regional Planning Commission
Land Use Program	None
Public Education/Awareness	None
Property Acquisition	None
Planning/Zoning Boards	None
Stream Maintenance Program	None
Tree Trimming Program	None
Engineering Studies for Streams (Local/County/Regional)	None
Mutual Aid Agreements	Yes, Among Volunteer Fire Departments & Ambulance Districts
Studies/Reports/Maps	
Hazard Analysis/Risk Assessment (Local)	N/A
Hazard Analysis/Risk Assessment (County)	Yes, <i>Wayne County Hazard Mitigation Plan, 2024</i>
Flood Insurance Maps	Yes, 6/16/2011
FEMA Flood Insurance Study (Detailed)	Yes, 6/16/2011 Product #: 29223CV000A
Evacuation Route Map	None
Critical Facilities Inventory	None
Vulnerable Population Inventory	None
Land Use Map	None
Staff/Department	
Building Code Official	None
Building Inspector	None
Mapping Specialist (GIS)	None
Engineer	None
Development Planner	None
Public Works Official	None
Emergency Management Director	Waylon Freeze
NFIP Floodplain Administrator	Brian Polk
Emergency Response Team	None
Hazardous Materials Expert	None
Local Emergency Planning Committee	LEPD
County Emergency Management Commission	None
Sanitation Department	None
Transportation Department	Wayne County Road & Bridge Department

Economic Development Department	Federal Grants Coordinator
Housing Department	None
Historic Preservation	Yes
Non-Governmental Organizations (NGOs)	
American Red Cross	No
Salvation Army	No
Veterans Groups	No
Local Environmental Organization	No
Homeowner Associations	No
Neighborhood Associations	No
Chamber of Commerce	East Wayne County Chamber of Commerce
Community Organizations (Lions, Kiwanis, etc.)	Yes, Lions Club, Rotary Club, Kiwanis Club

Source: Data Collection Questionnaire, 2023

2.2.2 City of Greenville

The City of Greenville is located in the central portion of Wayne County and serves as the county seat. The city is overseen by a mayor and city council that includes five alderpersons elected by designated wards and the mayor elected by all voters. A city clerk assists the council and mayor in the management of the city budget and operations.

The City of Greenville contracts with a local attorney for legal direction and services. Its public works director is responsible for overseeing the city’s municipal water and wastewater systems. The city relies on the Wayne Sheriff’s Department for law enforcement and the Greenville Volunteer Fire Department provides fire protection services. The East Wayne County Ambulance District provides emergency medical services for the city’s residents.

The city participates within the Ozark Foothills Local Emergency Planning District (LEPD). Consequently, the city is included within the district’s Local Emergency Operations Plan. Two outdoor warning sirens comprise the public warning siren system, which is operated by the Wayne County Sheriff’s Department. The city has no other community-specific hazard mitigation initiatives.

Per the 2022 American Community Survey, there are no non-English speaking populations included within the city. Disabled persons comprise 19.8% of the city’s population, or 72 persons. The total population of the city declined by 13.3% from 511 persons in 2010 to 443 persons in 2020 per the Decennial Census.

Table 2.7 below is based on the Data Collection Questionnaire distributed to each jurisdiction ^{3, 7, and 8}.

Table 2.7. City of Greenville Mitigation Capabilities

Capability	Status, Including Date of Document or Policy
Planning Capabilities	
Comprehensive Plan	None
Builder’s Plan	None
Capital Improvement Plan	None
Local Emergency Plan	<i>Ozark Foothills Emergency Operations Plan, 2004</i>
County Emergency Plan	N/A
Local Recovery Plan	None
County Recovery Plan	N/A
Local Mitigation Plan	<i>Wayne County Hazard Mitigation Plan, 2023</i>
County Mitigation Plan	N/A
Economic Development Plan	<i>Ozark Foothills Comprehensive Economic Development Plan, 2023</i>
Transportation Plan	<i>Ozark Foothills Regional Transportation Plan, 2023</i>
Land-use Plan	None
Flood Mitigation Assistance (FMA) Plan	None
Watershed Plan	None
Firewise or other fire mitigation plan	None, Ordinance Only
School Mitigation Plan	N/A
Critical Facilities Plan (Mitigation/Response/Reco)	None
Policies/Ordinance	
Zoning Ordinance	Yes
Building Code	Yes
Floodplain Ordinance	Yes, June 2011
Subdivision Ordinance	Yes, for mobile home parks only
Tree Trimming Ordinance	No
Nuisance Ordinance	Yes

Capability	Status, Including Date of Document or Policy
Storm Water Ordinance	Yes
Drainage Ordinance	Yes
Seismic Construction Ordinance	No
Capability	
Site Plan Review Requirements	No
Historic Preservation Ordinance	No
Landscape Ordinance	No
Wetlands and Riparian Areas Conservation Plan	None
Debris Management Plan	None, Ordinance Only
Program	
Zoning/Land Use Restrictions	Yes
Codes Building Site/Design	Yes
National Flood Insurance Program (NFIP)	Yes
NFIP Community Rating System (CRS) Participating Community	No
Hazard Awareness Program	No
National Weather Service (NWS) Storm Ready	No
Building Code Effectiveness Grading (BCEGs)	No
ISO Fire Rating	No
Economic Development Program	No
Land Use Program	No
Public Education/Awareness	No
Property Acquisition	No
Planning/Zoning Boards	Yes
Stream Maintenance Program	No
Tree Trimming Program	Yes
Engineering Studies for Streams	No
Mutual Aid Agreements	Yes
Studies/Reports/Maps	
Hazard Analysis/Risk Assessment (Local)	Yes, 2023
Hazard Analysis/Risk Assessment (County)	N/A
Flood Insurance Maps	Yes, 2011
FEMA Flood Insurance Study (Detailed)	Yes, 2011
Evacuation Route Map	No
Critical Facilities Inventory	No
Vulnerable Population Inventory	No
Land Use Map	No
Staff/Department	
Building Code Official	Yes
Building Inspector	Yes
Mapping Specialist (GIS)	No
Engineer	Yes
Development Planner	Yes
Public Works Official	Yes
Emergency Management Coordinator	Yes
NFIP Floodplain Administrator	Yes
Emergency Response Team	No
Hazardous Materials Expert	No
Local Emergency Planning Committee	Yes
County Emergency Management Commission	N/A
Sanitation Department	Yes
Transportation Department	No
Economic Development Department	Yes
Housing Department	No
Historic Preservation	Yes
Non-Governmental Organizations (NGOs)	
American Red Cross	No
Salvation Army	No
Veterans Groups	No
Environmental Organization	No

Capability	Status, Including Date of Document or Policy
Homeowner Associations	No
Neighborhood Associations	No
Chamber of Commerce	Yes
Community Organizations (Lions, Kiwanis, etc.)	Yes
Local Funding Availability	
Ability to apply for Community Development Block Grants	Yes
Ability to fund projects through Capital Improvements funding	Yes
Authority to levy taxes for a specific purpose	No
Fees for water, sewer, gas, or electric services	Yes
Impact fees for new development	No
Ability to incur debt through general obligation	No
Ability to incur debt through special tax bonds	No
Ability to incur debt through private activities	No
Ability to withhold spending in hazard prone areas	No

Source: Data Collection Questionnaire, 2023

2.2.3 City of Piedmont

The City of Piedmont is located in the western portion of Wayne County and is the county’s largest municipality in both land mass and population. The city is overseen by a mayor and city council that includes four council members elected by designated wards. The mayor is elected by all voters. A city clerk assists the council and mayor in the management of the city budget and operations.

The city contracts with a local attorney for legal direction and services. Its public works director is responsible for overseeing the city’s municipal water and wastewater systems. The city funds a fully operational police department to enforce laws. The Clearwater Fire Protection District provides fire protection services for city residents and business owners. The Piedmont Volunteer Fire Department provides fire suppression services for the city, with mutual aid support from the Clearwater Fire Protection District as needed. The Clearwater Ambulance District provides emergency medical services to the city’s residents. Major employers within the city include the Clearwater School District, Clark’s Mountain Nursing Home, and Z Manufacturing.

The city participates within the Ozark Foothills Local Emergency Planning District (LEPD). Consequently, the city is included within the district’s Local Emergency Operations Plan. Three outdoor warning sirens comprise the public warning system. The Piedmont Chamber of Commerce has a group text alert system informing community members of boil water alerts. The city has no other community-specific hazard mitigation initiatives.

Per the 2022 American Community Survey, there are very few non-English speaking populations included within the city (.2%). Disabled persons comprise 38.5% of the city’s population, or 1,035 persons. The total population of the city declined slightly—relative to the remainder of the planning area—by 4.1% from 1,977 persons in 2010 to 1,897 persons in 2020 per the Decennial Census.

Table 2.8 below is based on the Data Collection Questionnaire distributed to each jurisdiction^{3, 7, and 8}.

Table 2.8. City of Piedmont Mitigation Capabilities

Capability	Status, Including Date of Document or Policy
Planning Capabilities	

Comprehensive Plan	None
Builder's Plan	None
Capital Improvement Plan	None
Local Emergency Plan	Yes, 1994
County Emergency Plan	<i>Ozark Foothills Emergency Operations Plan, 2004</i>
Local Recovery Plan	None
County Recovery Plan	N/A
Local Mitigation Plan	<i>Wayne County Hazard Mitigation Plan, 2023</i>
County Mitigation Plan	N/A
Economic Development Plan	<i>Ozark Foothills Comprehensive Economic Development Plan, 2023</i>
Transportation Plan	<i>Ozark Foothills Regional Transportation Plan, 2023</i>
Land-use Plan	None
Flood Mitigation Assistance (FMA) Plan	None
Watershed Plan	None
Firewise or other fire mitigation plan	None
School Mitigation Plan	N/A
Critical Facilities Plan (Mitigation/Response/Recovery)	None
Policies/Ordinance	
Zoning Ordinance	Yes, 1983
Building Code	Yes, state code
Floodplain Ordinance	Yes, 2003
Subdivision Ordinance	Yes, 2015
Tree Trimming Ordinance	Yes, 2003
Nuisance Ordinance	Yes, 2003
Storm Water Ordinance	No
Drainage Ordinance	No
Seismic Construction Ordinance	Yes, 2003
Capability	
Site Plan Review Requirements	No
Historic Preservation Ordinance	Yes
Landscape Ordinance	No
Wetlands and Riparian Areas Conservation Plan	None
Debris Management Plan	None
Program	
Zoning/Land Use Restrictions	Yes
Codes Building Site/Design	Yes
National Flood Insurance Program (NFIP) Participant	Yes
NFIP Community Rating System (CRS) Participating Community	No
Hazard Awareness Program	No
National Weather Service (NWS) Storm Ready	No
Building Code Effectiveness Grading (BCEGs)	No
ISO Fire Rating	None
Economic Development Program	No
Land Use Program	No
Public Education/Awareness	No
Property Acquisition	No
Planning/Zoning Boards	Yes
Stream Maintenance Program	No
Tree Trimming Program	Yes
Engineering Studies for Streams (Local/County/Regional)	No
Mutual Aid Agreements	Yes
Studies/Reports/Maps	
Hazard Analysis/Risk Assessment (Local)	Yes, 2023
Hazard Analysis/Risk Assessment (County)	N/A

Flood Insurance Maps	Yes, 2011
FEMA Flood Insurance Study (Detailed)	Yes, 2011
Evacuation Route Map	No
Critical Facilities Inventory	No
Vulnerable Population Inventory	No
Land Use Map	No
Staff/Department	
Building Code Official	No
Building Inspector	No
Mapping Specialist (GIS)	No
Engineer	No
Development Planner	Yes
Public Works Official	Yes
Emergency Management Coordinator	Yes
NFIP Floodplain Administrator	Yes
Emergency Response Team	No
Hazardous Materials Expert	No
Local Emergency Planning Committee	Yes
County Emergency Management Commission	N/A
Sanitation Department	No
Transportation Department	No
Economic Development Department	Yes
Housing Department	No
Historic Preservation	No
Non-Governmental Organizations (NGOs)	
American Red Cross	No
Salvation Army	No
Veterans Groups	No
Environmental Organization	No
Homeowner Associations	No
Neighborhood Associations	No
Chamber of Commerce	Yes
Community Organizations (Lions, Kiwanis, etc.)	Yes
Local Funding Availability	
Ability to apply for Community Development Block Grants	Yes
Ability to fund projects through Capital Improvements funding	Yes
Authority to levy taxes for a specific purpose	No
Fees for water, sewer, gas, or electric services	Yes
Impact fees for new development	No
Ability to incur debt through general obligation bonds	No
Ability to incur debt through special tax bonds	No
Ability to incur debt through private activities	No
Ability to withhold spending in hazard prone areas	No

Source: Data Collection Questionnaire, 2023

2.2.4 City of Williamsville

The City of Williamsville is located in the southern portion of Wayne County along Missouri Highway 34. The city is overseen by a mayor and city council that includes five council members elected by designated wards. The mayor is elected by all voters. A part-time city clerk assists the council and mayor in the management of the city budget and operations.

The City of Williamsville contracts with a local attorney for legal direction and services. Its public works director is responsible for overseeing the city's municipal water and wastewater systems. The city employs a part-time police officer who functions as the Chief of Police to provide law

enforcement for the community. The Williamsville Volunteer Fire Department provides fire protection services. The East Wayne County Ambulance District provides emergency medical services for the city's residents.

The city participates within the Ozark Foothills Local Emergency Planning District (LEPD). Consequently, the city is included within the district's Local Emergency Operations Plan. One outdoor warning siren comprises the public warning system. The city has no other community-specific hazard mitigation initiatives.

Per the 2022 American Community Survey, there are no non-English speaking populations included within the city. Disabled persons comprise 41.7% of the city's population, or 118 persons. The total population of the city declined by 18.4% from 342 persons in 2010 to 279 persons in 2020 per the Decennial Census.

Table 2.7 below is based on the Data Collection Questionnaire distributed to each jurisdiction^{3,7, and 8}.

Table 2.9. City of Williamsville Mitigation Capabilities

Capability	Status, Including Date of Document or Policy
Planning Capabilities	
Comprehensive Plan	None
Builder's Plan	None
Capital Improvement Plan	None
Local Emergency Plan	<i>Ozark Foothills Emergency Operations Plan, 2004</i>
County Emergency Plan	N/A
Local Recovery Plan	None
County Recovery Plan	N/A
Local Mitigation Plan	<i>Wayne County Hazard Mitigation Plan, 2023</i>
County Mitigation Plan	N/A
Economic Development Plan	<i>Ozark Foothills Comprehensive Economic Development Plan, 2023</i>
Transportation Plan	<i>Ozark Foothills Regional Transportation Plan, 2023</i>
Land-use Plan	None
Flood Mitigation Assistance (FMA) Plan	None
Watershed Plan	None
Firewise or other fire mitigation plan	None
School Mitigation Plan	N/A
Critical Facilities Plan (Mitigation/Response/Recovery)	None
Policies/Ordinance	
Zoning Ordinance	No
Building Code	No
Floodplain Ordinance	Yes, June 2011
Subdivision Ordinance	No
Tree Trimming Ordinance	No
Nuisance Ordinance	Yes
Storm Water Ordinance	No
Drainage Ordinance	No
Seismic Construction Ordinance	No
Capability	
Site Plan Review Requirements	No
Historic Preservation Ordinance	No
Landscape Ordinance	No
Wetlands and Riparian Areas Conservation Plan	None

Debris Management Plan	None
Program	
Zoning/Land Use Restrictions	No
Codes Building Site/Design	No
National Flood Insurance Program (NFIP) Participant	Yes
NFIP Community Rating System (CRS) Participating Community	No
Hazard Awareness Program	No
National Weather Service (NWS) Storm Ready	No
Building Code Effectiveness Grading (BCEGs)	No
ISO Fire Rating	8.5
Economic Development Program	No
Land Use Program	No
Public Education/Awareness	No
Property Acquisition	No
Planning/Zoning Boards	No
Stream Maintenance Program	No
Tree Trimming Program	No
Engineering Studies for Streams (Local/County/Regional)	No
Mutual Aid Agreements	Yes
Studies/Reports/Maps	
Hazard Analysis/Risk Assessment (Local)	Yes, 2023
Hazard Analysis/Risk Assessment (County)	N/A
Flood Insurance Maps	Yes, 2011
FEMA Flood Insurance Study (Detailed)	Yes, 2011
Evacuation Route Map	No
Critical Facilities Inventory	No
Vulnerable Population Inventory	No
Land Use Map	No
Staff/Department	
Building Code Official	Yes, Part-Time
Building Inspector	Yes, Part-Time
Mapping Specialist (GIS)	No
Engineer	No
Development Planner	No
Public Works Official	Yes, Full-Time
Emergency Management Coordinator	Yes, Part-Time
NFIP Floodplain Administrator	Yes, Part-Time
Emergency Response Team	None
Hazardous Materials Expert	No
Local Emergency Planning Committee	None
County Emergency Management Commission	N/A
Sanitation Department	Yes
Transportation Department	None
Economic Development Department	Yes
Housing Department	None
Historic Preservation	None
Non-Governmental Organizations (NGOs)	
American Red Cross	No
Salvation Army	No
Veterans Groups	No
Environmental Organization	No
Homeowner Associations	No
Neighborhood Associations	No
Chamber of Commerce	No
Community Organizations (Lions, Kiwanis, etc.)	Yes, Lions Club

Local Funding Availability	
Ability to apply for Community Development Block Grants	Yes
Ability to fund projects through Capital Improvements funding	Yes
Authority to levy taxes for a specific purpose	No
Fees for water, sewer, gas, or electric services	Yes
Impact fees for new development	No
Ability to incur debt through general obligation bonds	No
Ability to incur debt through special tax bonds	No
Ability to incur debt through private activities	No
Ability to withhold spending in hazard prone areas	No

Source: Data Collection Questionnaire, 2023

2.2.5 Summary of Jurisdictional Capabilities^{3, 7, and 8}

The following table summarizes the mitigation capabilities of the county and its incorporated communities.

Table 2.10. Mitigation Capabilities Summary Table

CAPABILITIES	Unincorporated Wayne County	City of Greenville	City of Piedmont	City of Williamsville
Planning Capabilities				
Comprehensive Plan	None	None	None	None
Builder's Plan	None	None	None	None
Capital Improvement Plan	None	None	None	None
Local Emergency Plan	N/A	Yes, 2004	Yes, 2004	Yes, 2004
County Emergency Plan	Yes, 2004	N/A	N/A	N/A
Local Recovery Plan	N/A	None	None	None
County Recovery Plan	None	N/A	N/A	N/A
Local Mitigation Plan	N/A	Yes, 2023	Yes, 2023	Yes, 2023
County Mitigation Plan	Yes, 2023	N/A	N/A	N/A
Debris Management Plan	None	None	None	None
Economic Development Plan	Yes, 2023	Yes, 2023	Yes, 2023	Yes, 2023
Transportation Plan	Yes, 2023	Yes, 2023	Yes, 2023	Yes, 2023
Land-use Plan	None	None	None	None
Flood Mitigation Assistance (FMA) Plan	None	None	None	None
Watershed Plan	None	None	None	None
Firewise or other fire mitigation plan	None	None	None	None
School Mitigation Plan	N/A	N/A	N/A	N/A
Critical Facilities Plan (Mitigation/Response/Recovery)	None	None	None	None
Policies/Ordinance				
Zoning Ordinance	No	Yes	Yes	No
Building Code	No	Yes	Yes	No
Floodplain Ordinance	Yes	Yes	Yes	Yes

CAPABILITIES	Unincorporated Wayne County	City of Greenville	City of Piedmont	City of Williamsville
Subdivision Ordinance	No	No	No	No
Tree Trimming Ordinance	No	No	No	No
Nuisance Ordinance	No	No	No	Yes
Storm Water Ordinance	No	Yes	No	No
Drainage Ordinance	No	Yes	No	No
Site Plan Review Requirements	No	No	No	No
Historic Preservation Ordinance	No	Yes	No	No
Landscape Ordinance	No	No	No	No
Seismic Construction Ordinance	No	No	No	No
Program				
Zoning/Land Use Restrictions	No	Yes	Yes	No
Codes Building Site/Design	No	Yes	Yes	No
National Flood Insurance Program (NFIP) Participant	Yes	Yes	Yes	Yes
NFIP Community Rating System (CRS) Participating Community	No	No	No	No
Hazard Awareness Program	No	No	No	No
National Weather Service (NWS) Storm Ready	No	No	No	No
Building Code Effectiveness Grading (BCEGs)	No	No	No	No
ISO Fire Rating	No	No	No	Yes, 8.5
Economic Development Program	No	No	No	No
Land Use Program	No	No	No	No
Public Education/Awareness	No	No	No	No
Property Acquisition	No	No	No	No
Planning/Zoning Boards	No	Yes	Yes	No
Stream Maintenance Program	No	No	No	No
Tree Trimming Program	No	No	No	No
Engineering Studies for Streams (Local/County/Regional)	No	No	No	No
Mutual Aid Agreements	Yes	Yes	Yes	Yes

CAPABILITIES	Unincorporated Wayne County	City of Greenville	City of Piedmont	City of Williamsville
Studies/Reports/Maps				
Hazard Analysis/Risk Assessment (Local)	N/A	Yes	Yes	Yes
Hazard Analysis/Risk Assessment (County)	Yes	N/A	N/A	N/A
Flood Insurance Maps	Yes	Yes	Yes	Yes
FEMA Flood Insurance Study (Detailed)	Yes	Yes	Yes	Yes
Evacuation Route Map	No	No	No	No
Critical Facilities Inventory	No	No	No	No
Vulnerable Population Inventory	No	No	No	No
Land Use Map	No	No	No	No
Staff/Department				
Building Code Official	No	Yes	Yes	No
Building Inspector	No	Yes	Yes	No
Mapping Specialist (GIS)	No	No	No	No
Engineer	No	No	No	No
Development Planner	No	No	No	No
Public Works Official	No	Yes	Yes	Yes
Emergency Management Coordinator	Yes	Yes	Yes	Yes
NFIP Floodplain Administrator	Yes	Yes	Yes	Yes
Emergency Response Team	No	No	No	No
Hazardous Materials Expert	No	No	No	No
Local Emergency Planning Committee	N/A	Yes	Yes	Yes
County Emergency Management Commission	Yes	N/A	N/A	N/A
Sanitation Department	No	No	No	No
Transportation Department	No	No	No	No
Economic Development Department	No	No	No	No
Housing Department	No	No	No	No
Historic Preservation	Yes	Yes	Yes	No
Non-Governmental Organizations (NGOs)				

CAPABILITIES	Unincorporated Wayne County	City of Greenville	City of Piedmont	City of Williamsville
American Red Cross	No	No	No	No
Salvation Army	No	No	No	No
Veterans Groups	No	No	No	No
Environmental Organization	No	No	No	No
Homeowner Associations	No	No	No	No
Neighborhood Associations	No	No	No	No
Chamber of Commerce	Yes	Yes	Yes	No
Community Organizations (Lions, Kiwanis, etc.)	No	Yes	Yes	Yes

Financial Resources				
Apply for Community Development Block Grants	Yes	Yes	Yes	Yes
Fund projects through Capital Improvements funding	No	No	No	No
Authority to levy taxes for specific purposes	No	No	No	No
Fees for water, sewer, gas, or electric services	No	Yes	Yes	Yes
Impact fees for new development	No	No	No	No
Incur debt through general obligation bonds	No	No	No	No
Incur debt through special tax bonds	No	No	No	No
Incur debt through private activities	No	No	No	No
Withhold spending in hazard prone areas	No	No	No	No

Source: Data Collection Questionnaires, 2023

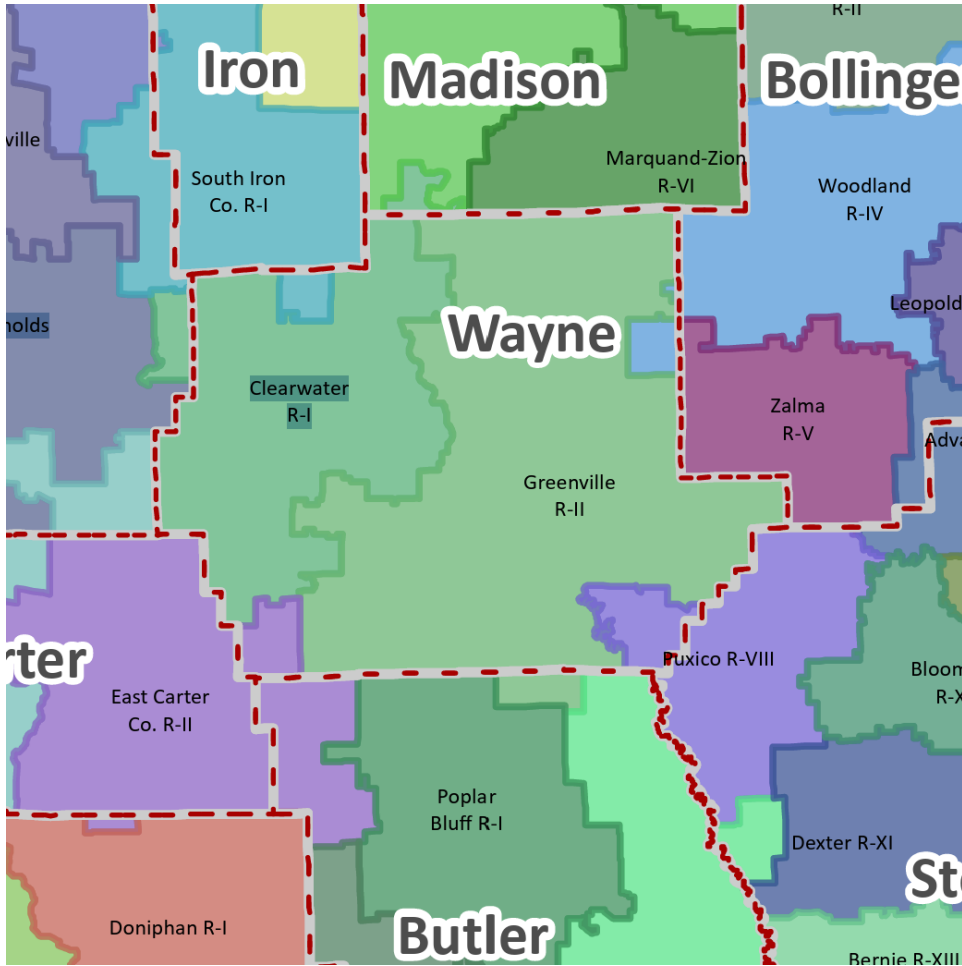
2.2.6 Special District

No special districts participated as contributing jurisdictions within the update of this plan.

2.2.7 School District Profiles and Mitigation Capabilities

Both school districts within Wayne County, Missouri participated within the current plan update. The two school Districts include Clearwater R-I School district and Greenville R-II School District. Clearwater R-I School District is headquartered in Piedmont, Missouri while Greenville R-II is headquartered in Greenville, Missouri. Four other school districts—East Carter R-II, South Iron R-I, Puxico R-VIII, and Woodland R-IV have small portions of service areas located within the county. Though invited to participate in the plan update, only one district—East Carter County R-II—attended the planning meetings. A map of the school districts within Wayne County is depicted below within Figure 2.3.

Figure 2.3. Wayne County, School District Map



Source: [School Districts Map County 2023-24.pdf](#)

Data limitations regarding the school district may exist as both Clearwater R-I and Greenville R-II have small portions of service area located in adjacent counties. For example, Greenville R-II extends slightly into northern Butler County while Clearwater R-I's service area extends into

southeastern Reynolds County and southwestern Madison County.

Table 2.11. School Districts in Wayne County, Buildings and Enrollment Data, Fall 2023

District Name	Building Name	Building Enrolment
Clearwater R-I School District	Clearwater Elementary School (PK-4)	400
Clearwater R-I School District	Clearwater Middle School (5-8)	265
Clearwater R-I School District	Clearwater High School (9-12)	246
Greenville R-II School District	Greenville Elementary School	287
Greenville R-II School District	Greenville Jr. High School	128
Greenville R-II School District	Greenville High School	204
Greenville R-II School District	Williamsville Elementary School	65

Source: <https://dese.mo.gov/school-data>, 2023

Table 2.12 on the following page summarizes the school districts' capabilities for hazard mitigation. The information in this table was pulled from the completed Data Collection Questionnaires.

Table 2.12. Summary of Mitigation Capabilities-Clearwater R-I and Greenville R-II School Districts

Capability	Clearwater R-I School District	Greenville R-I School District
Planning Elements		
Master Plan/ Date	Yes, 4/11/2023 (District CSIP Plan)	Yes, June 2023 (District CSIP Plan)
Capital Improvement Plan/Date	Yes, 9/13/2022	August 2022
School Emergency Plan / Date	Yes	Yes
Weapons Policy/Date	Yes	Yes
Personnel Resources		
Full-Time Building Official (Principal)	Yes, 3—1 @ each school	Yes, 4—1 @ each school
Emergency Manager	Yes, District Safety Coordinator (Elementary Principal)	Superintendent
Grant Writer	No	No
Public Information Officer	Yes (Superintendent)	Superintendent
Financial Resources		
Capital Improvements Project Funding	No	Yes
Local Funds	No	No
General Obligation Bonds	Yes (Limited by vote)	Yes
Special Tax Bonds	No	No
Private Activities/Donations	No	No
State and Federal Funds/Grants	No	Yes
Other		
Public Education Programs	Yes	Yes
Privately or Self- Insured?	Private	Private
Fire Evacuation Training	Yes	Yes
Tornado Sheltering Exercises	Yes	Yes
Public Address/Emergency Alert System	Yes	Yes
NOAA Weather Radios	Yes	Yes
Lock-Down Security Training	Yes	Yes
Mitigation Programs	Yes	Yes
Tornado Shelter/Saferoom	Yes (@ elementary school)	Yes (@ both elementary schools)
Campus Police	Yes – 1.5 FTE SRO's Contracted via County Sheriff's Office	Yes – 1.0 FTE SRO's Contracted via County Sheriff's Office

Source: Data Collection Questionnaires, 2023

